



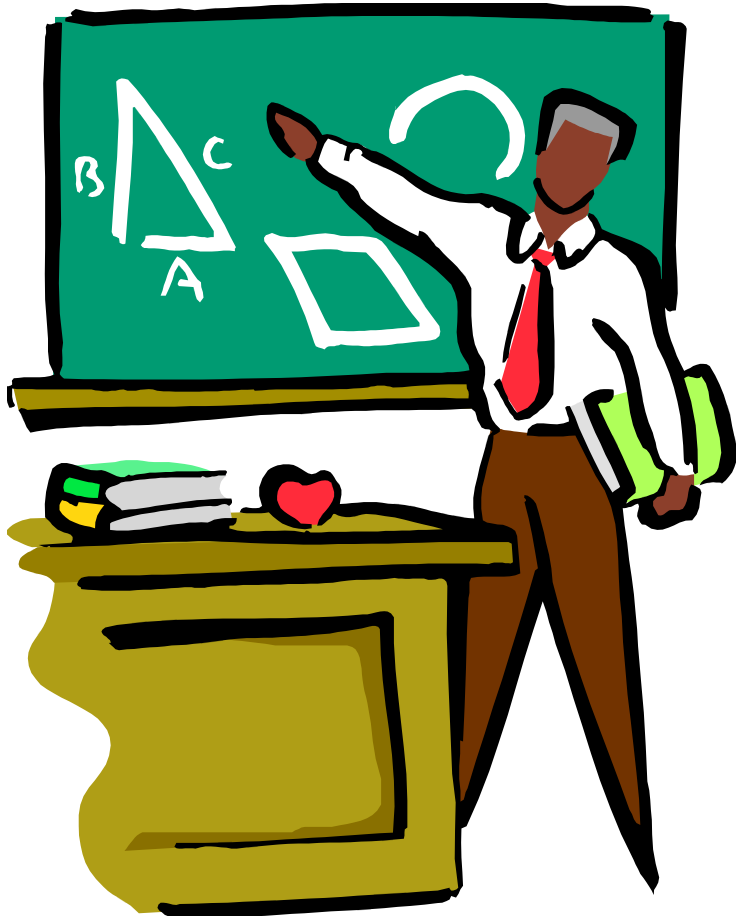
# Addendum to Chapter 3 (Network layer)

## Note:

Addendums are integral parts of lectures and their content is included in the scope of exams.



## Addendum to chapter 3 (Network layer)



- 1 - More on NAT
- 2 - More on mobility



## More on NAT

L. Zhang, A Retrospective View of Network Address Translation, IEEE Network, September / October 2008, Vol. 22, No5



## More on mobility management

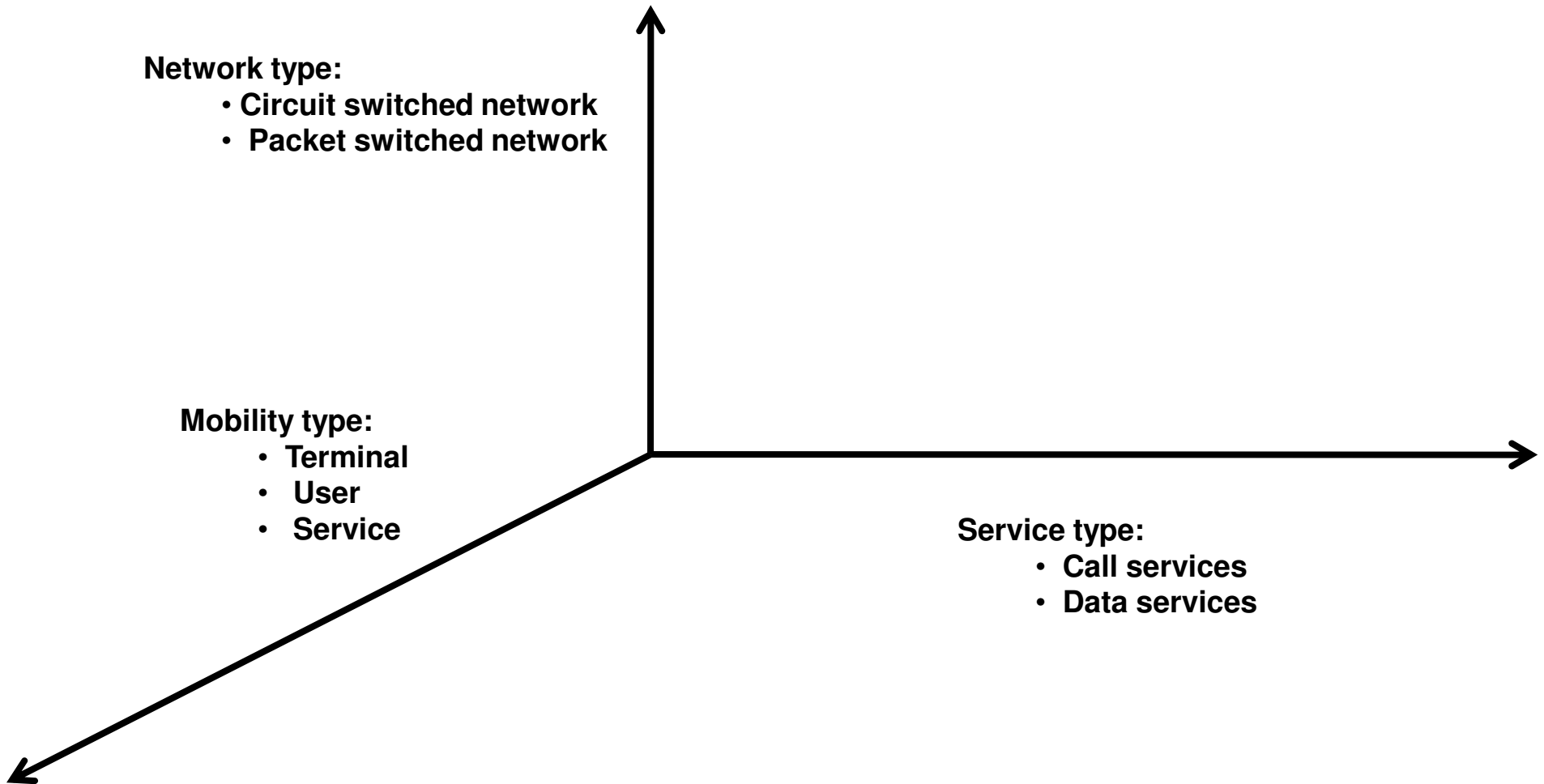
### The three types of mobility

- Terminal mobility (handoff / handover)
  - Keep on-going calls or data sessions while moving across cells
    - Cells are controlled by base stations / access points
    - Movement maybe within a domain or across domains
- User mobility
  - Can use any terminal in home or foreign domain (GSM SIM card)
- Service mobility
  - Have access to the very same set of services while in a foreign domain



# More on mobility management

## Mobility management: a multidimensional problem





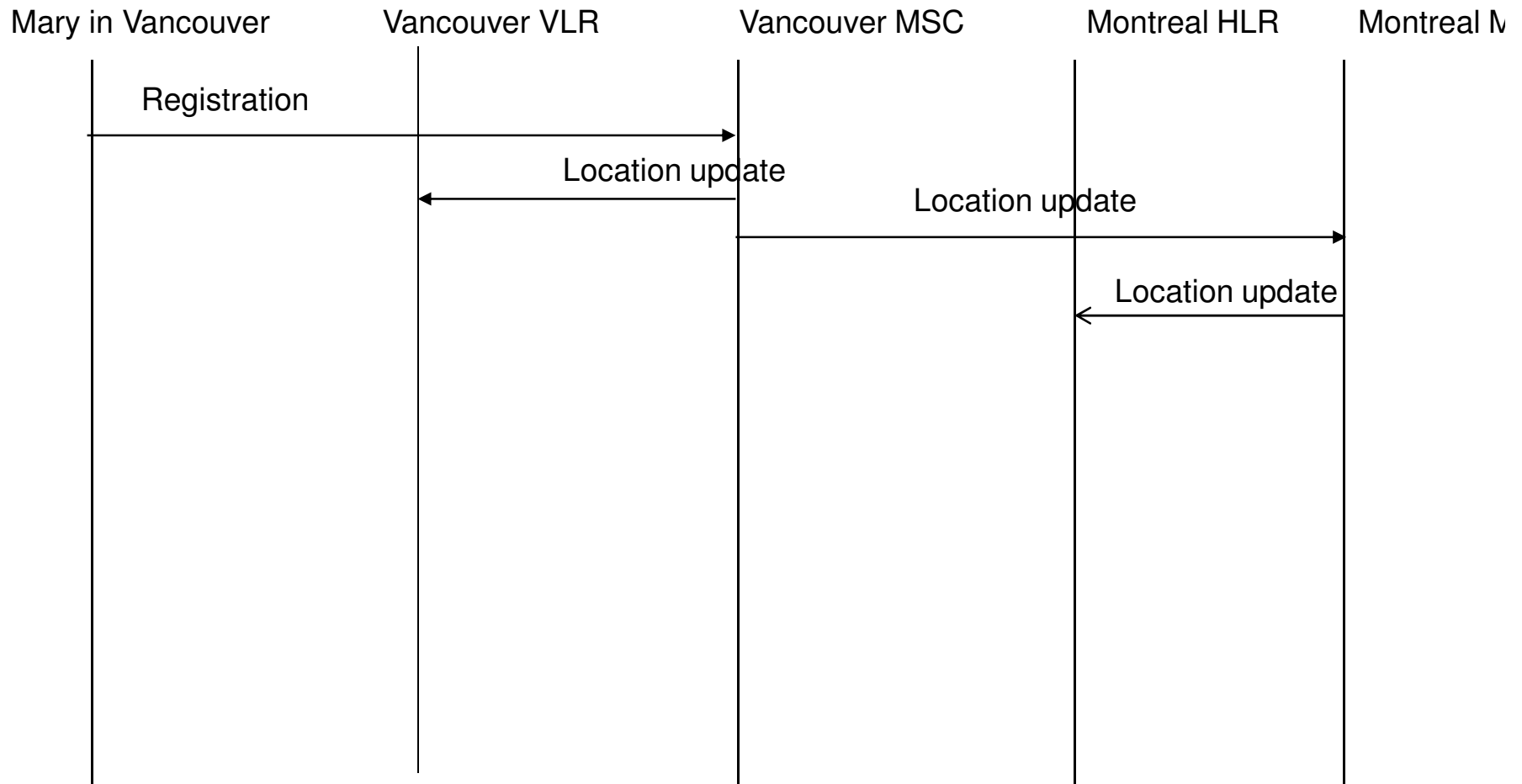
## More on mobility management

Some approaches to solve the problem:

- Telcos cellular network approach (Terminal mobility, user mobility in GSM)
- Mobile IP
- More on the telco cellular network approach
  - Cover both call services and data services

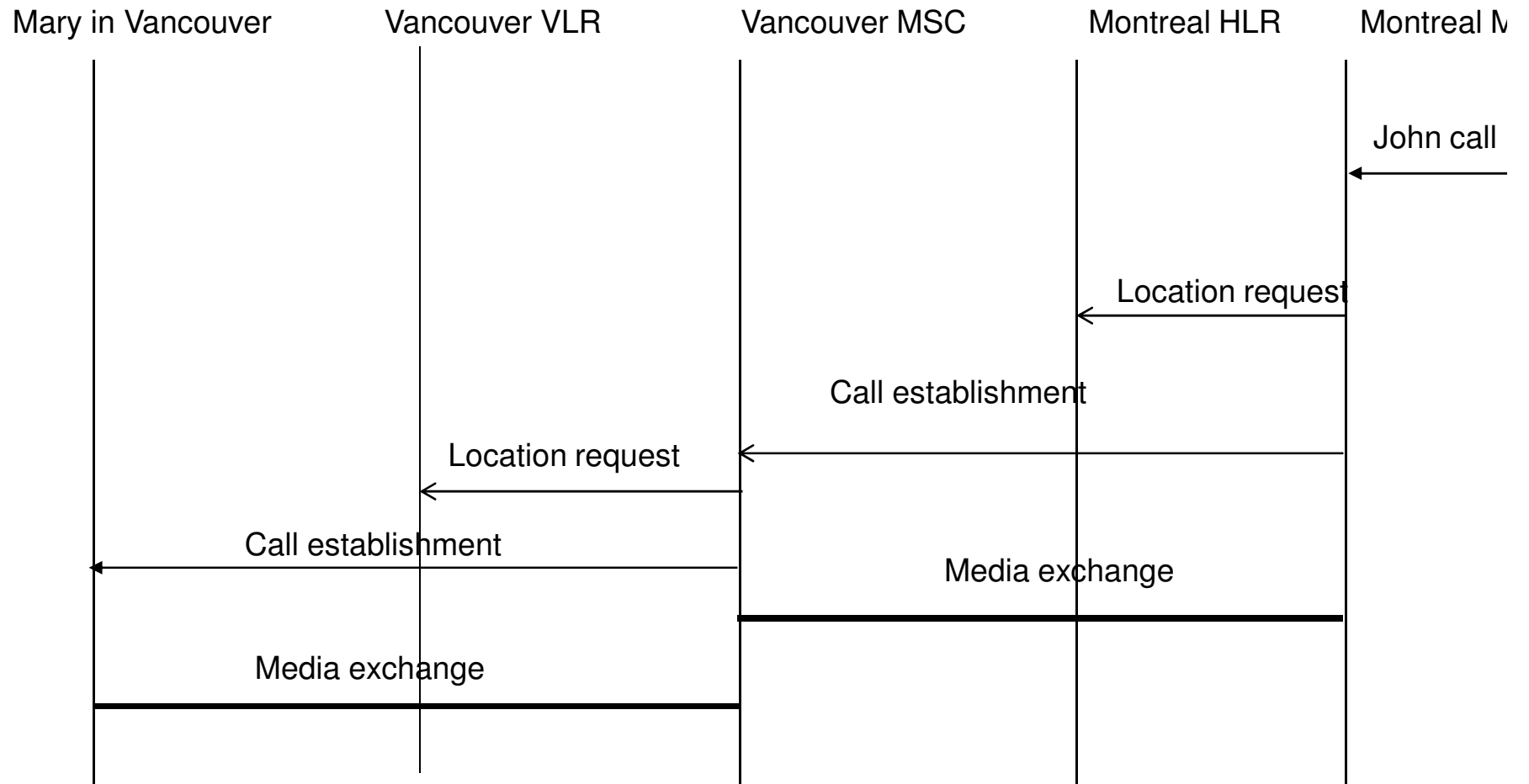


## Mary a Montreal subscriber turns her phone on while roaming in Vancouver





## John in Montreal calls Mary







## Alice in Vancouver calls Mary

